

## LFAA Leadership

< ABOUT US

### Board of Directors

### Co-Presidents



**Brenna Devaney**



**Diane Lucas**

### Co-Vice Presidents



**Kori Crew**



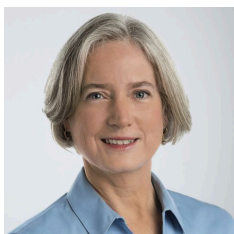
**Ted Howard**

### Secretary



**Ben Weinberg**

## **Treasurer**



**Kitty Wach**

## **Executive Committee**



**Harlene Katzman**

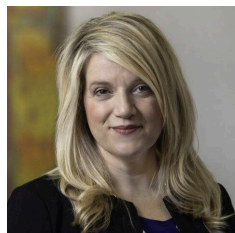


**Jeff Berman**

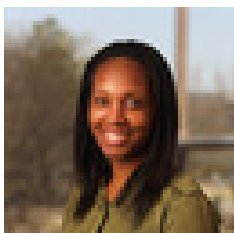
## **At-Large Board Members**



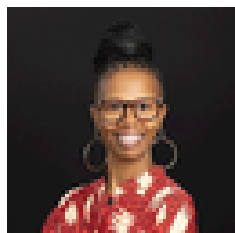
**David Lash**



**Heidi Naasko**



**Kiisha Morrow**



**Kristen Johnson**



**William Chapman**



**Paul Kiernan**



**Paul Lee**



**Robert Hover**

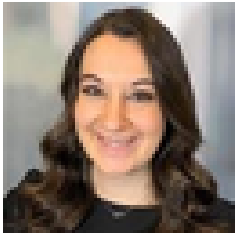


**Tamara Caldas**



**Roz Nasdor**

## **Special Assistant to the Board**



**Jennifer Minervini**

LFAA is not a law firm and does not provide legal services or referrals to individuals, legal services organizations or public interest agencies. If you believe you need a lawyer, please contact your local bar association or go to [www.lawhelp.org](http://www.lawhelp.org).

